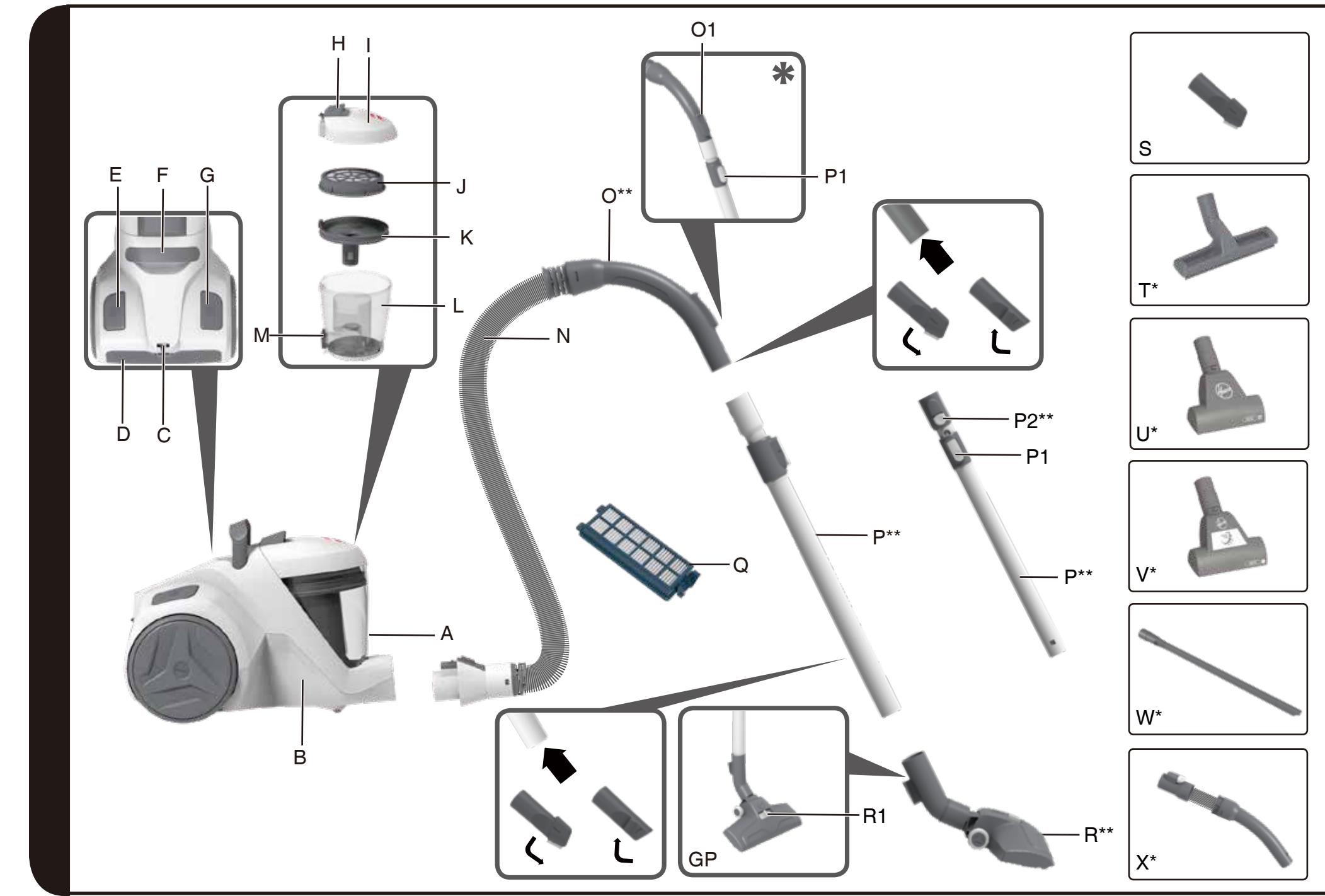


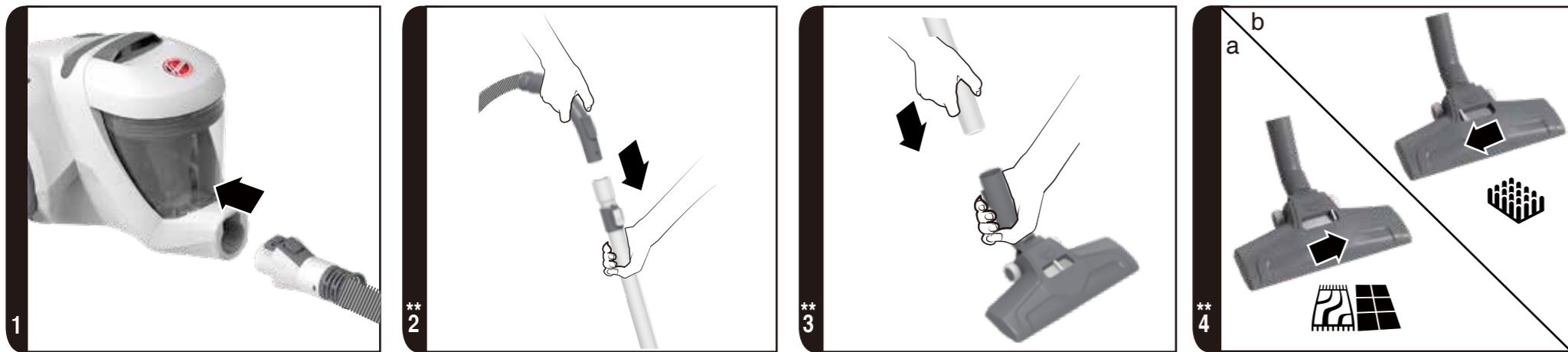


USER MANUAL

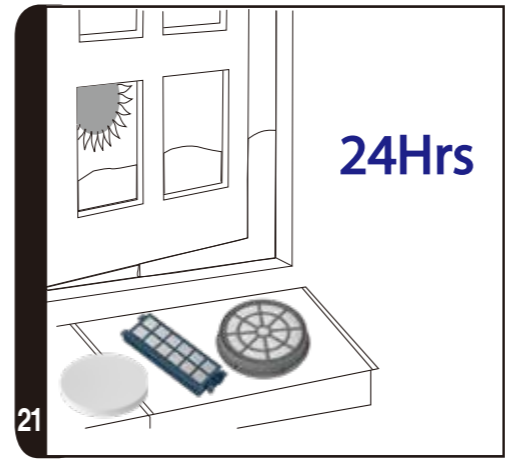
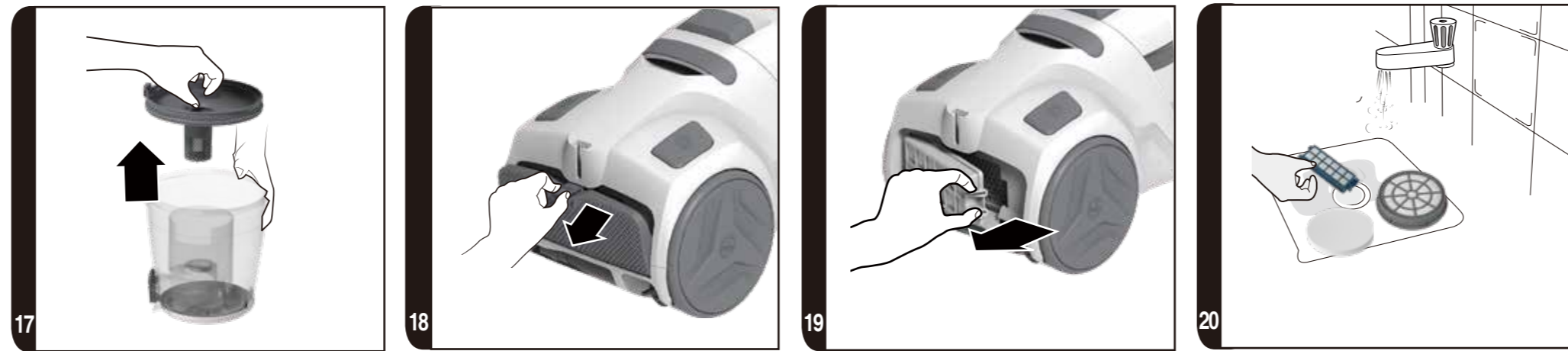
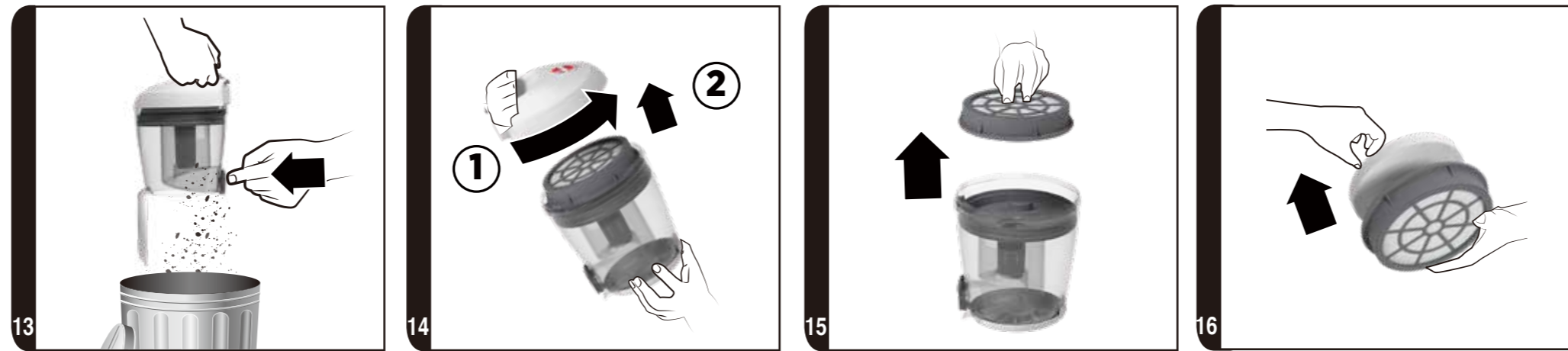
PRINTED IN P.R.C.
48034672



*Certain Models Only **May vary according to models



*Certain Models Only **May vary according to models



*Certain Models Only **May vary according to models

INSTRUCTIONS FOR SAFE USE

This appliance should only be used for domestic cleaning, as described in this user guide. Please ensure that this guide is fully understood before operating the appliance.

Do not leave the appliance plugged in. Always switch off and remove the plug from the socket after use, or before cleaning the appliance or any maintenance task.

This appliance can be used by children aged from 8 years and above and persons with reduced physical, sensory or mental capabilities or lack of experience and knowledge if they have been given supervision or instruction concerning use of the appliance in a safe way and understand the hazards involved. Children shall not play with the appliance. Cleaning and user maintenance shall not be made by children without supervision.

If the power cord is damaged stop using the appliance immediately. To avoid a safety hazard, an authorized HOOVER service engineer must replace the power cord.

Keep hands, feet, loose clothing and hair away from rotating brushes.

Use only attachments, consumables or spares recommended or supplied by HOOVER.

Static electricity: Some carpets can cause a small build up of static electricity. Any static discharge is not hazardous to health. Do not pick up hard or sharp objects, matches, hot ashes, cigarette ends or other similar items.

Do not spray with or pick up flammable liquids, cleaning fluids, aerosols or their vapours.

Do not run over the power cord when using your appliance or remove the plug by pulling on the power cord.

Do not continue to use your appliance if it appears faulty.

HOOVER service: To ensure the continued safe and efficient operation of this appliance we recommend that any servicing or repairs are only carried out by an authorised HOOVER service engineer.

Do not stand on or wrap the cord around arms or legs when using your appliance.

Do not use the appliance to clean animals or people.

Do not position the appliance above you when cleaning the stairs.

The Environment

The symbol on this appliance indicates that this appliance may not be treated as household waste. Instead it must be handed over to the applicable collection point for the recycling of electrical and electronic equipment. Disposal must be carried out in accordance with local environmental regulations for waste disposal. For more detailed information about treatment, recovery and recycling of this appliance, please contact your local city office, your household and waste disposal service or the shop where you purchased the appliance.



This product complies with the European Directives 2014/35/EU, 2014/30/EU and 2011/65/EU.

CANDY HOOVER GROUP S.r.l. Via Privata Eden Fumagalli, 20861 Brugherio (MB) Italy

GETTING TO KNOW YOUR CLEANER

- | | |
|-----------------------------|---|
| A. Dust Bin Assembly | O. Hose Handle** |
| B. Cleaner Main Body | O1. Suction Control Slider* |
| C. Parking Slot | P. Telescopic Tube** |
| D. Exhaust Filter Cover | P1. Telescopic Tube Adjuster Button |
| E. On/Off Pedal | P2. Telescopic tube secure connection** |
| F. Retractable Carry Handle | Q. Exhaust Filter |
| G. Cord Reel Pedal | R. Carpet & Floor Nozzle (GP)** |
| H. Dust Bin Release Button | R1. Nozzle Suction Regulator* |
| I. Dust Bin Lid | S. 2 in 1 Tool |
| J. Pre-Motor Filter | T. Parquet Nozzle* |
| K. Vortex Finder | U. Pet Hair Remover Mini Turbo Nozzle* |
| L. Dust Bin & Cyclone Body | V. Allergen Remover Mini Turbo Nozzle* |
| M. Dust Bin Emptying Button | W. Long Flexible Crevice Tool* |
| N. Hose | X. Stretched Hose* |

ASSEMBLING YOUR CLEANER


Remove all components from the packaging.


1. Connect the hose to the cleaner main body, ensuring **that** it clips and locks into position.[1]
2. To release: simply press the button on the hose end and pull.[1]
3. Connect the hose handle to the upper extension tube end, or accessories if required.[2]
4. Connect the extension tube lower end to the carpet and floor nozzle**, or accessories if required.[3**]

USING YOUR CLEANER

1. Extract power cord and plug it into the power supply. Do not pull the cord beyond the red marker.[6]
2. Adjust the telescopic tube to the desired height by pushing the telescopic tube button and moving the telescopic tube adjuster up and raise or lower the tube to the most comfortable cleaning position.[5]
3. **Carpet and Floor Nozzle****: Adjust the suction control slider on the nozzle according to your cleaning needs: [4]

Hard Floor Cleaning: Adjust the suction control slider on the nozzle to the symbol.  [4a]

Standard Carpet: Adjust the suction control slider on the nozzle to the symbol.  [4a]

Long Pile Carpet: Adjust the suction control slider on the nozzle to the symbol.  [4b]

The suction control can also be used to reduce the operating push force.

4. Switch the cleaner on by pressing the On/Off Pedal on the cleaner main body. [7]

*Certain Models Only ** May vary according to model

5. Adjust the suction on the hose handle to the desired level.[8]
6. Switch off at the end of use by pressing the On/Off Pedal. Unplug the power cord to wind it back into the cleaner by pressing the Cord Reel Pedal.[10]

PARKING AND STORAGE SECTION

The tube and nozzle can be parked on the back of the cleaner for storage or temporary storage while in use.[11]

ACCESSORIES

All accessories can be fitted to the end of the hose handle or the end of the telescopic tube.

2 in 1 Tool [S] combines several functions into one tool:

Crevice Tool – For corners and hard to reach areas.

Dusting Brush – For bookshelves, frames, keyboards and other delicate areas.

Parquet Nozzle* [T*] – For parquet floors and other delicate floors.

Pet Hair Remover Mini Turbo Nozzle* [U*]- Use the mini turbo nozzle on stairs or for deep cleaning on textile surfaces and other hard to clean areas. Particularly suitable for pet hairs removal.

Allergen Remover Mini Turbo Nozzle* [V*] – Use the mini turbo nozzle on stairs or for deep cleaning on textile surfaces and other hard to clean areas, particularly suitable for allergen removal.

Stretched hose* [X*] – Use the stretched hose to increase the working radius of your cleaner.

IMPORTANT: Do not use mini turbo nozzles on rugs with long fringes, animal hides and carpet pile deeper than 15mm. **Do not keep the nozzle stationary while brush is rotating.**

CLEANER MAINTENANCE

Emptying the Dust Bin

When the dust reaches the max level indicator on the bin, empty the dust bin.

IMPORTANT: To maintain optimum performance, do not allow the dust to exceed the max level.

1. Turn off the cleaner by pressing On/Off Pedal and unplug the power cord.[7,10]
2. Pull the bin release button and remove the dust bin assembly from the cleaner.[12]
3. Hold the dust bin with one hand and press the dust bin emptying button to open dust bin flap.[13]
4. Empty the dust bin.[13]
5. Close the dust bin flap and refit the dust bin assembly to the cleaner main body.

Cleaning the Washable Filters

The cleaner is fitted with a pre-motor filter and an exhaust filter. To maintain optimum cleaning performance, regularly remove the filters and tap against the side of the bin to release dust. The filters should be washed every 5 dust bin empties or when the filters have excessive dust level.

IMPORTANT: All bagless cleaners require regular filters cleaning. Failure to

clean your filters may result in air blockage, overheating and product failure. This may invalidate your guarantee.

IMPORTANT: Regularly check and maintain the filters.

IMPORTANT: Always ensure the filters are fully dry before use.

To access the pre-motor filter:

1. Pull the dust bin release button and remove the dust bin from the cleaner.[12]
2. Hold the dust bin with one hand and with the other hand remove the dust bin lid by rotating anti-clockwise.[14]
3. Remove the pre-motor filter assembly from the bin and separate the filter from the filter frame.[15,16]
4. Gently tap and wash the pre-motor filter and the frame. Do not use hot water or detergents. Remove excess water from the filter and leave to dry fully before re-using.[20,21]
5. Reassemble the pre-motor filter assembly once fully dry and refit to the cleaner.

IMPORTANT: The bin lid will NOT close if the pre-motor filter is not assembled to the Dust Bin. Always ensure the pre-motor filter is present when closing the bin lid.

To access the exhaust filter:

1. Unclip the exhaust filter cover from the rear of the cleaner main body.[18]
2. Remove the exhaust filter from the rear of the cleaner.[19]
3. Gently tap and wash the filter using warm water. Do not use hot water or detergents. Remove excess water from the filter and leave to dry fully before re-using.[20,21]
4. Refit the exhaust filter to the rear of the cleaner once fully dry and refit the exhaust filter cover.

IMPORTANT: Do not use the product without the filter pack fitted.

Cleaning the dust container / separation unit

This cleaner uses a separation system unique to Hoover. If necessary, the separation unit can be disassembled from the dust container and cleaned.

1. Pull the dust bin release button and remove the bin assembly from the cleaner.[12]
2. Hold the bin with one hand and with the other hand remove the dust bin lid by rotating anti-clockwise.[14]
3. Remove the pre-motor filter assembly from the dust bin. And then remove the vortex finder.[15,17]
4. If necessary, use a cloth to remove excessive dust from the vortex finder surface.
5. Place the dust bin under the tap. Rinse with lukewarm water. Wash internal surfaces of the dust bin with water only. DO NOT use soap detergents to wash the internals of the dust bin.
6. Reassemble the internal components to the dust bin, ensuring all components are dry.
7. Close over the dust bin lid and refit dust bin assembly to cleaner.

Removing a blockage

1. Check if the Dust Bin is full. If so, refer to 'Emptying the Dust Bin'.
2. If the Dust Bin is empty, but suction is still low:

A. Do the filters need cleaning? If so refer to 'Cleaning the washable filters'.

*Certain Models Only ** May vary according to model

- B. Check if there is any other blockage in the system - Use a rod or pole to remove any blockage from the extension tube or flexible hose.
- C. Check if pre-motor filter is fitted.
- D. Check if the separation unit needs to be cleaned. Refer to 'Cleaning the separation unit'.

Warning - If the cleaner is used for a significant period of time with a blockage, a thermal cut out will switch the cleaner off to prevent overheating. If this should happen, switch the cleaner off, unplug and correct the fault. It will take about 45 minutes for the cutout to automatically reset.

USER CHECKLIST

Should you have a problem with the product, complete this simple user checklist before calling your local Hoover service.

- Is there a working electricity supply to the cleaner? Please check with another electrical appliance.
- Is the dust container over-filled? Please refer to 'Cleaner Maintenance'.
- Is the filter blocked? Please refer to 'Cleaner Maintenance'.
- Is the hose or nozzle blocked? Please refer to 'Removing a blockage from the system'.
- Has the cleaner overheated? If so, it will take approximately 45 minutes to automatically reset.

IMPORTANT INFORMATION

Hoover spares and Consumables

Always replace parts with genuine Hoover spares. These are available from your local Hoover dealer or direct from Hoover. When ordering parts always quote your model number.

Hoover Service

Should you require service at any time, please contact your local Hoover Service Office.

Quality

Hoover's factories have been independently assessed for quality. Our products are made using a quality system which meets the requirements of ISO 9001.

Your Guarantee

The guarantee conditions for this appliance are as defined by our representative in the country in which it is sold. Details regarding these conditions can be obtained from the dealer from whom the appliance was purchased. The bill of sale or receipt must be produced when making any claim under the terms of this guarantee.

Subject to change without notice.